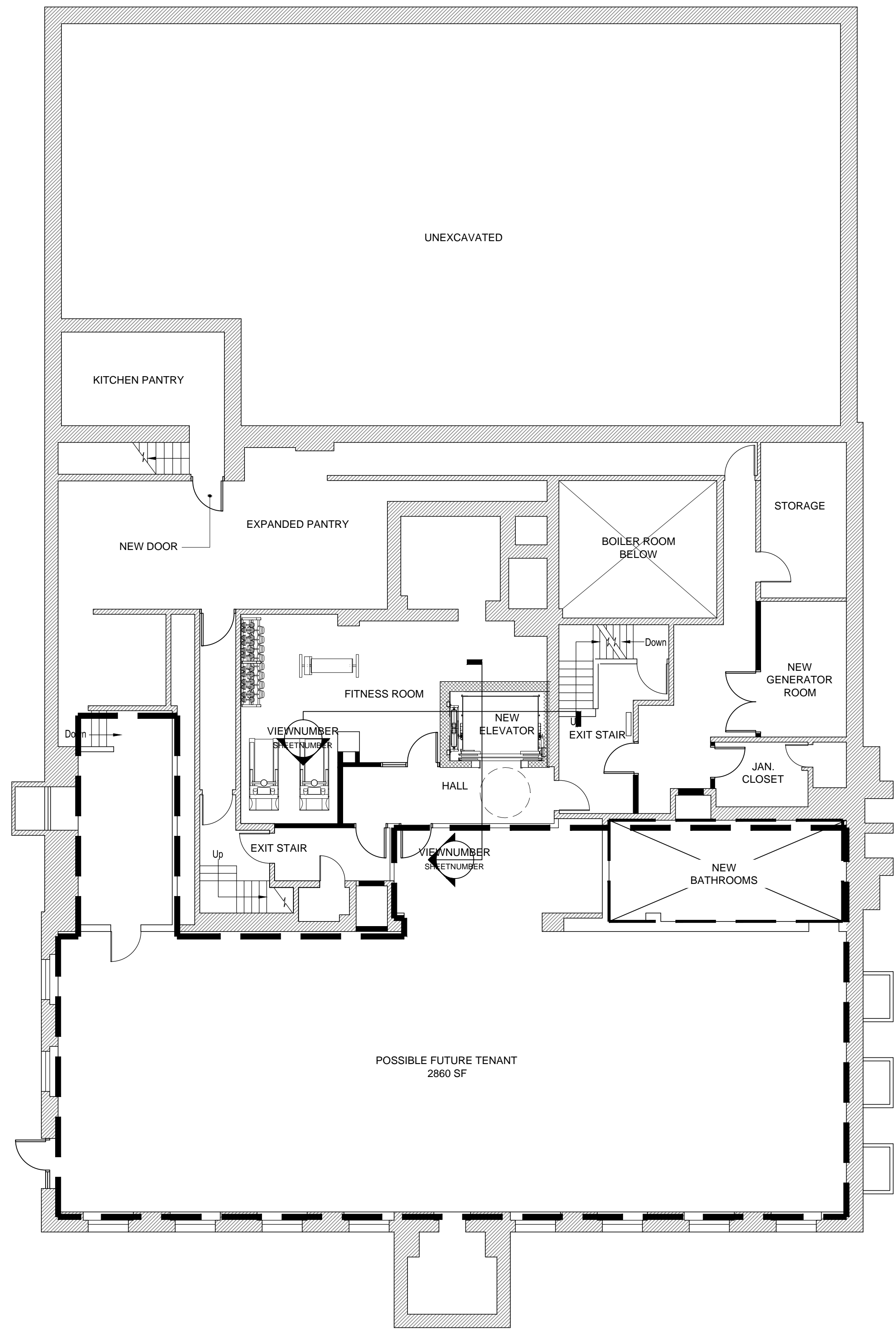


1 SUB-BASEMENT RENOVATION PLAN
1/8" = 1'-0"

SUB-BASEMENT



2 BASEMENT RENOVATION PLAN
1/8" = 1'-0"

BASEMENT

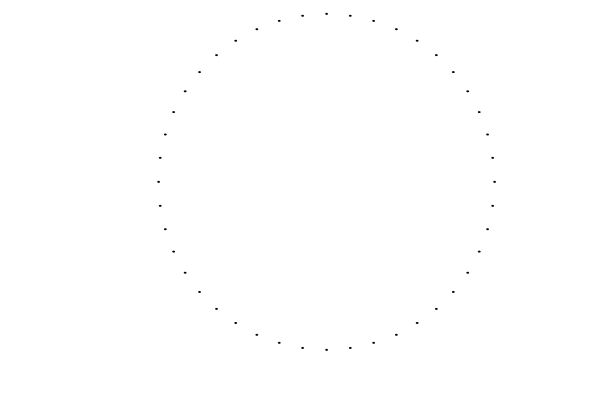
REVISIONS:

NO.	DATE	DESCRIPTION

CONSULTANTS:

JOB TITLE:
CENTRE AVENUE HOUSING

2621 Centre Avenue
Pittsburgh, PA 15219

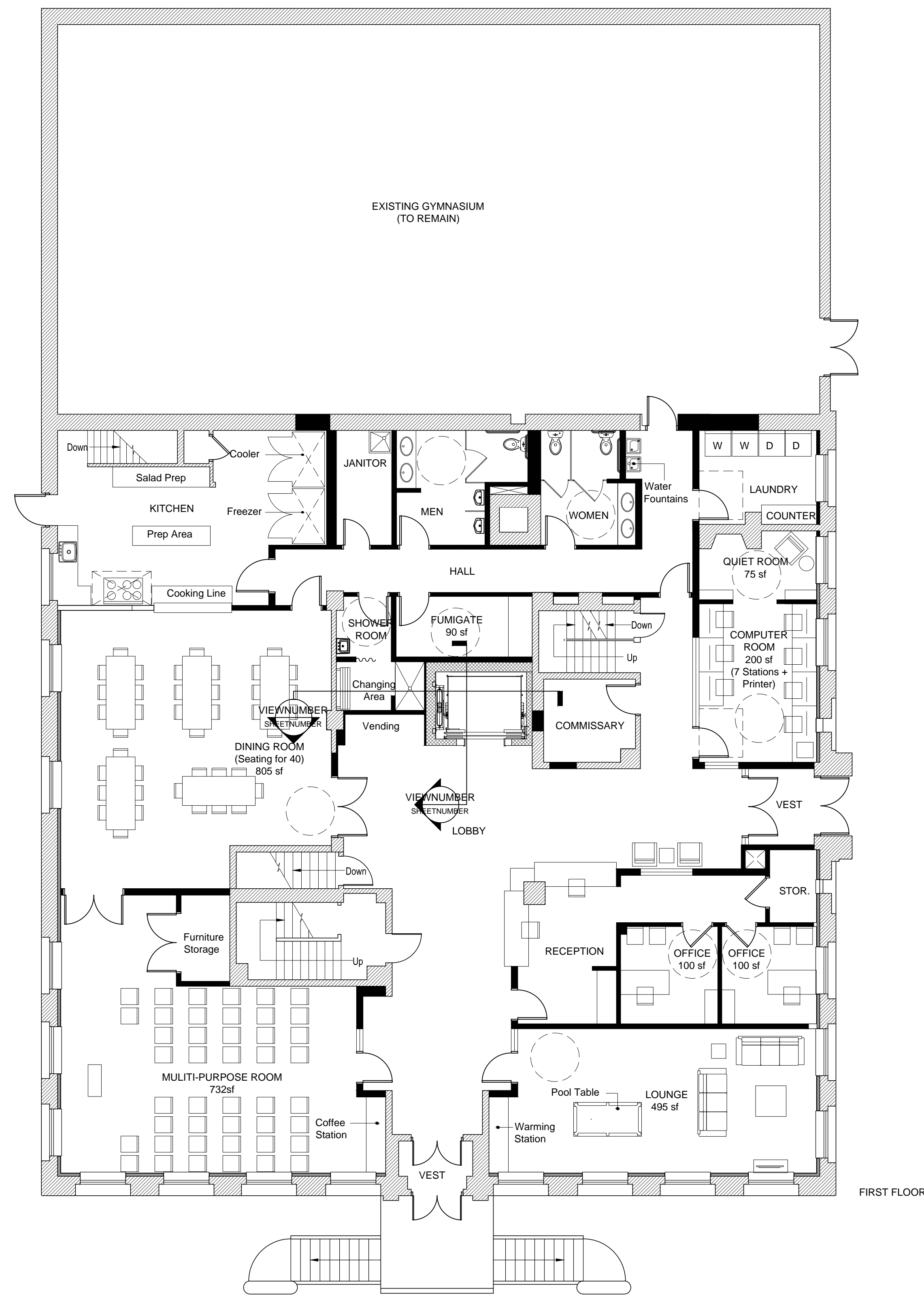


RSH | ARCHITECTS
363 Vonadium Road, Suite 200
Pittsburgh, PA 15243
Architecture 412.427.1553 T
Planning 412.279.7265 F
Interiors 412.279.7265 F
www.rsharc.com

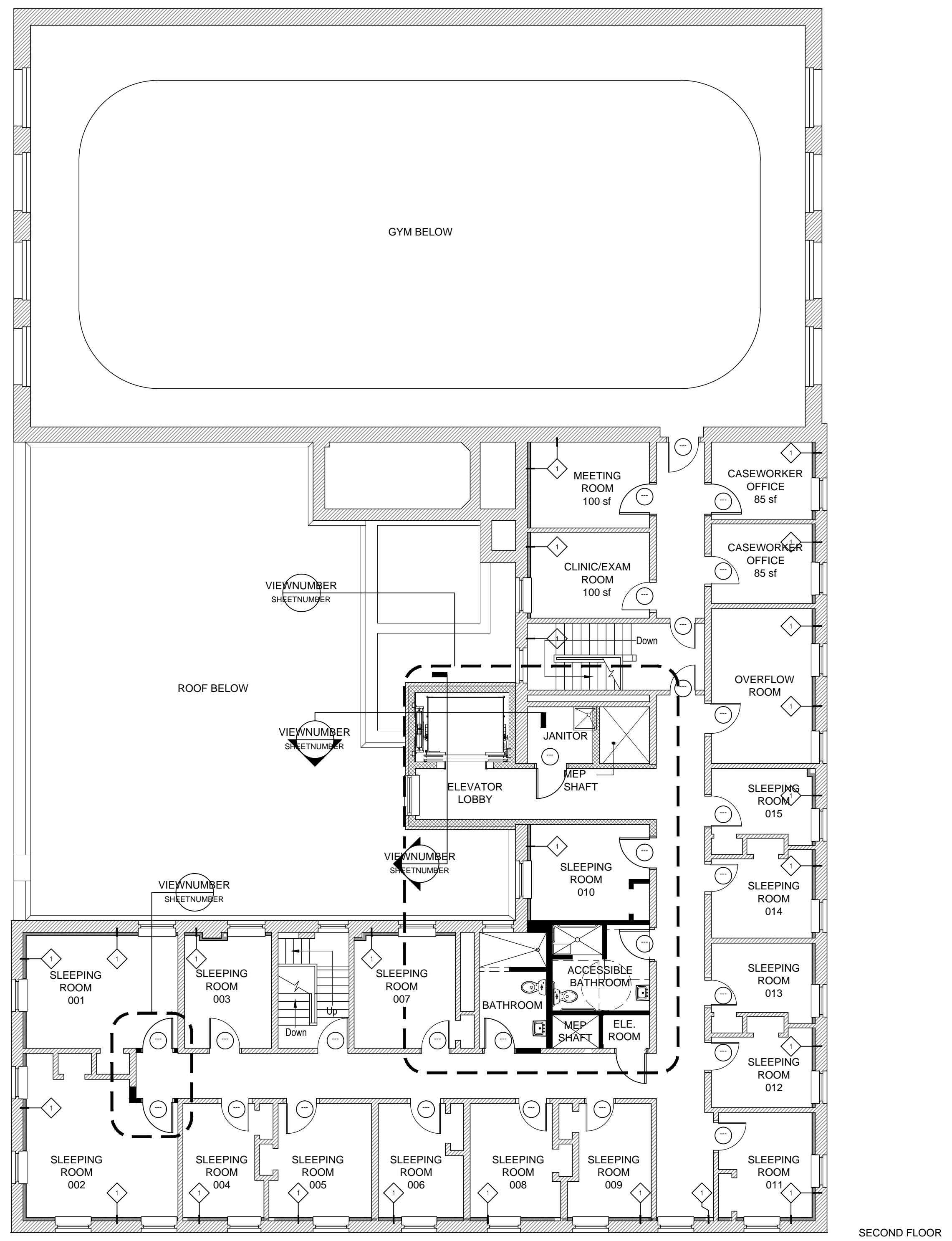
DESIGN DEVELOPMENT
DRAWING TITLE:
SUB-BASEMENT RENOVATION PLAN
BASEMENT RENOVATION PLAN

DATE: February 26, 2018
PROJ. NO.: 2017-035
SHEET NO.:

A1.1



1 FIRST FLOOR RENOVATION PLAN
1/8" = 1'-0"



2 SECOND FLOOR RENOVATION PLAN
1/8" = 1'-0"

REVISIONS:

NO.	DATE	DESCRIPTION

CONSULTANTS:

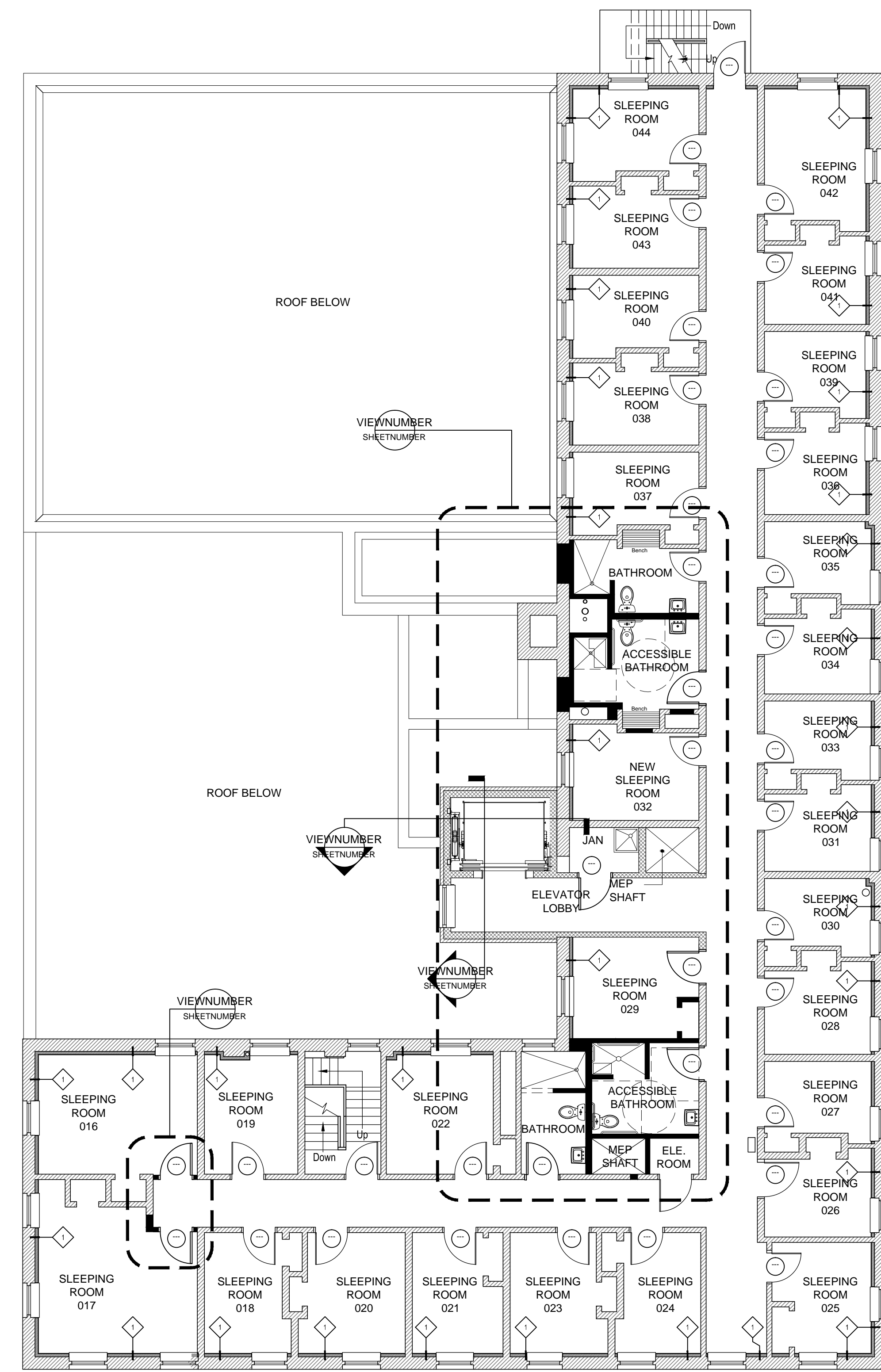
JOB TITLE:
CENTRE AVENUE HOUSING

2621 Centre Avenue
Pittsburgh, PA 15219

RSH | ARCHITECTS
363 Varodum Road, Suite 200
Pittsburgh, PA 15243
Architecture 412.429.1551
Planning 412.429.1551
Interior 412.279.7265 F
www.rsharc.com

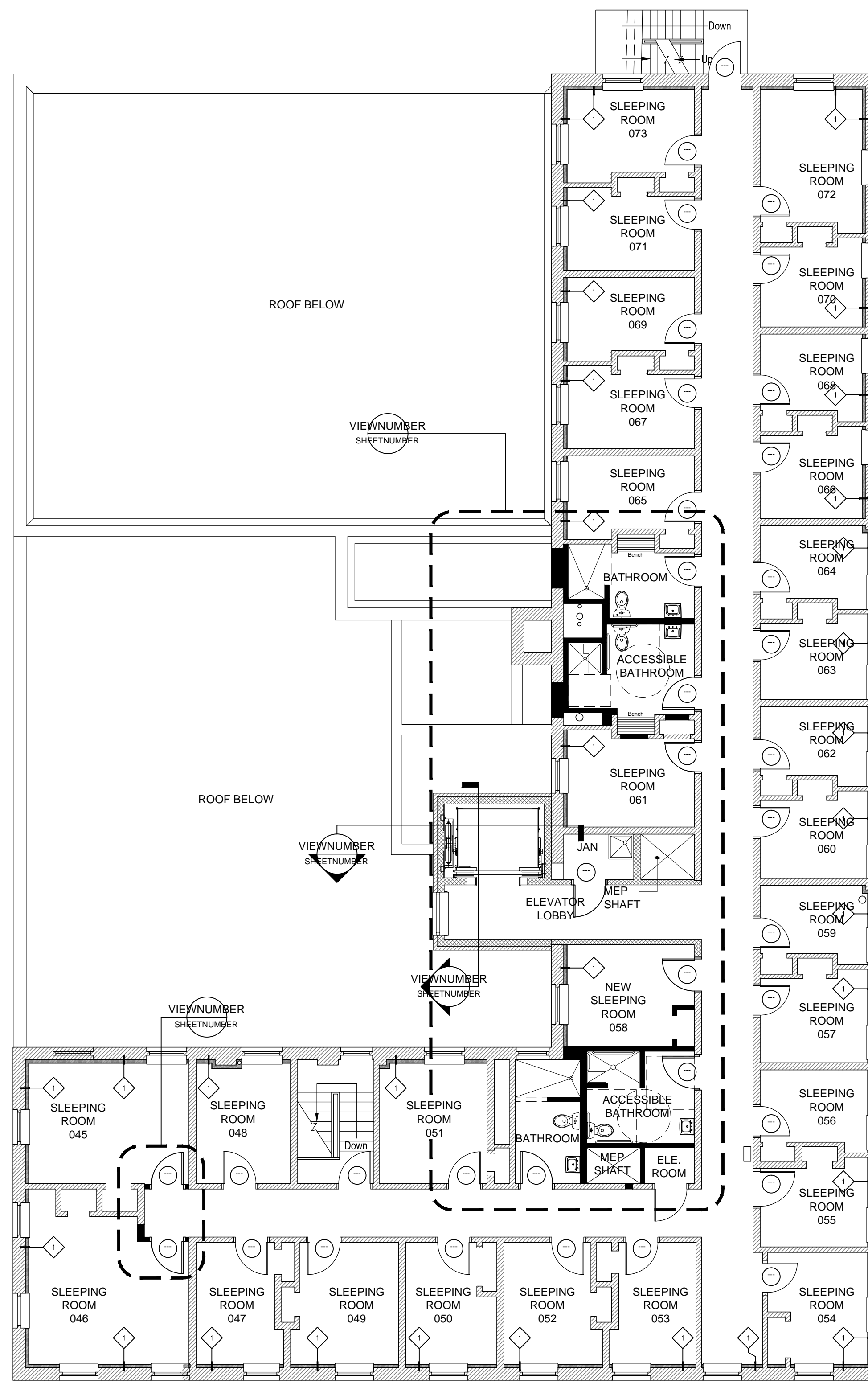
DESIGN DEVELOPMENT
DRAWING TITLE:
FIRST FLOOR RENOVATION PLAN
SECOND FLOOR RENOVATION PLAN

DATE: February 26, 2018
PROJ. NO.: 2017-035
SHEET NO.:



THIRD FLOOR

1 THIRD FLOOR RENOVATION PLAN
1/8" = 1'-0"



FOURTH FLOOR

2 FOURTH FLOOR RENOVATION PLAN
1/8" = 1'-0"

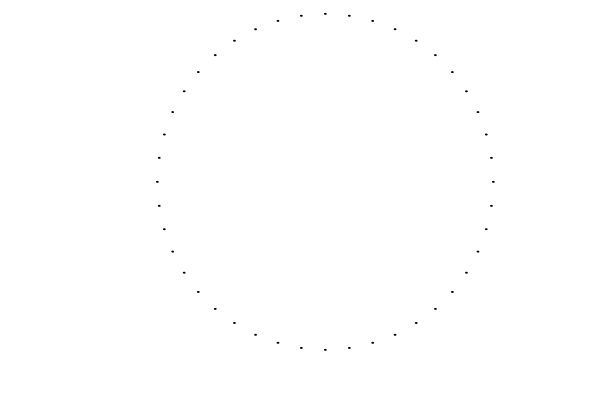
REVISIONS:

NO.	DATE	DESCRIPTION

CONSULTANTS:

JOB TITLE:
CENTRE AVENUE HOUSING

2621 Centre Avenue
Pittsburgh, PA 15219



RSH | ARCHITECTS
 363 Varodum Road, Suite 200
 Pittsburgh, PA 15243
 Architecture 412.429.1551 T
 Planning 412.279.7265 F
 Interiors www.rsharc.com

DESIGN DEVELOPMENT

DRAWING TITLE:
THIRD FLOOR RENOVATION PLAN
FOURTH FLOOR RENOVATION PLAN

DATE:
February 26, 2018

PROJ. NO.:
2017-035

SHEET NO.:

A1.3