



PROJECT ARCHITECT
5411 PENN AVE
PITTSBURGH PA, 15206
513.241.8700
GBBN.COM

COMMUNION LLC
COMMUNION LLC 2144 WYLIE
AVENUE FL 3 PITTSBURGH,
PA, 15219

CONSULTANTS

Allen+Shariff
MEP Engineering

MEP
ALLEN & SHARIFF
2 Allegheny Center
Nova Tower 2, Suite 1001
412-322-9280

WBCM
A Division of Transbrampton

STRUCTURAL
WBCM
600 Bursca Dr Suite 609
Pittsburgh, PA 15017
412.221.5385

Cosmos
TECHNOLOGIES

CIVIL
COSMOS TECHNOLOGIES, INC.
700 River Avenue, Suite 100
Pittsburgh, PA 15212-5936
412-321-3951

DRAWING ISSUE

DESIGN DEVELOPMENT

| NO. | DATE | DESCRIPTION |
|-----|----------|------------------|
| 1 | 06/08/23 | Schematic Design |
| | | |
| | | |
| | | |
| | | |
| | | |
| | | |
| | | |
| | | |
| | | |

DRAWING TITLE

TITLE SHEET

SEAL

**PRELIMINARY
NOT FOR
CONSTRUCTION**

JOB NUMBER

14838

G001

06.08.23

HERRON & WYLIE

DESIGN DEVELOPMENT

2930 WYLIE AVE PITTSBURGH, PA 15219
565 HERRON AVE, PITTSBURGH, PA 15219

BLOCK 27-A, LOTS 124 & 125



OWNER /REDEVELOPER

COMMUNION LLC
2144 WYLIE AVENUE FL 3
PITTSBURGH, PA, 15219
412-589-9518

PROJECT TEAM

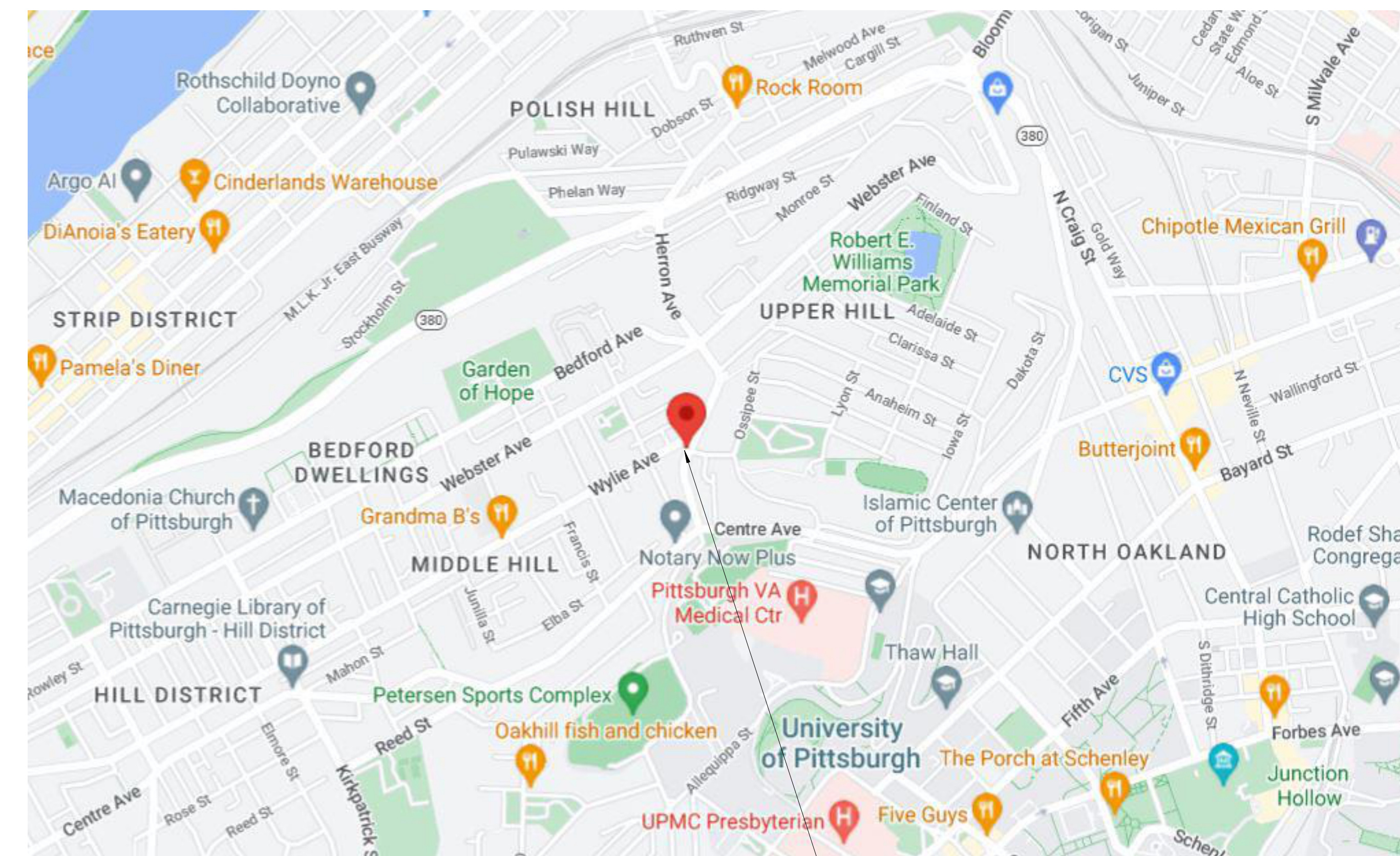
PROJECT ARCHITECT
GBBN Architects Inc.
5411 PENN AVE
PITTSBURGH PA, 15206
513.241.8700
www.gbbn.com

MEP
ALLEN & SHARIFF
2 Allegheny Center
Nova Tower 2, Suite 1001
412-322-9280

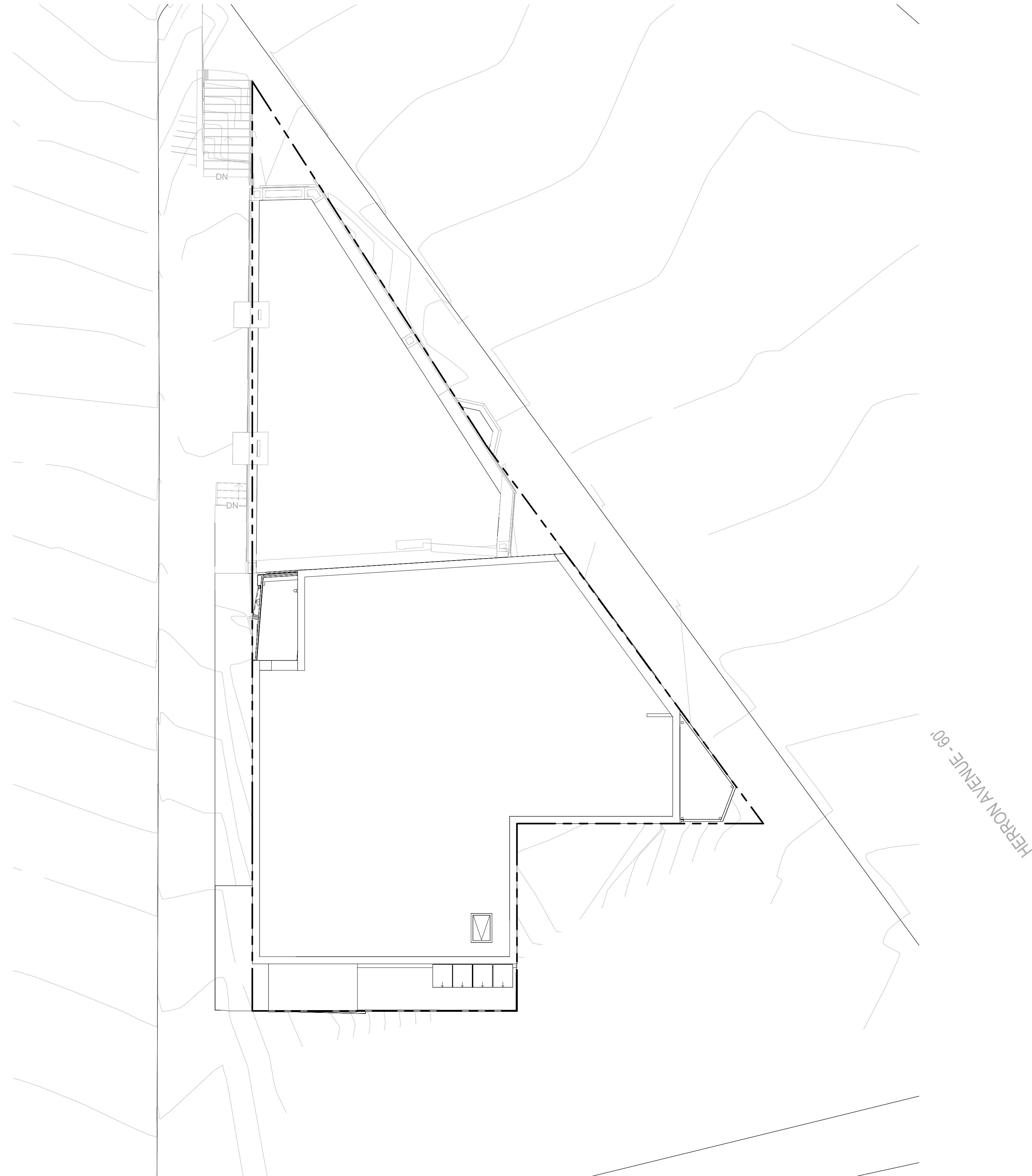
STRUCTURAL
WBCM
600 Bursca Dr Suite 609
Pittsburgh, PA 15017
412.221.5385

CIVIL
COSMOS TECHNOLOGIES, INC.
700 River Avenue, Suite 100
Pittsburgh, PA 15212-5936
412-321-3951

LOCATION MAP



SITE



1 Site
AA001 SCALE: 1/8" = 1'-0"



PROJECT ARCHITECT
5411 PENN AVE
PITTSBURGH PA, 15206
513.241.8700
GBBN.COM

COMMUNION LLC
COMMUNION LLC 2144 WYLIE
AVENUE FL 3 PITTSBURGH,
PA, 15219

CONSULTANTS



MEP
ALLEN & SHARIFF
2 Allegheny Center
Nova Tower 2, Suite 1001
412-322-9280



STRUCTURAL
WBCM
600 Bursca Dr Suite 609
Pittsburgh, PA 15017
412-221-5385



CIVIL
COSMOS TECHNOLOGIES, INC.
700 River Avenue, Suite 100
Pittsburgh, PA 15212-5936
412-321-3951

DRAWING ISSUE

DESIGN DEVELOPMENT

| NO. | DATE | DESCRIPTION |
|-----|------|-------------|
| | | |
| | | |
| | | |
| | | |
| | | |
| | | |
| | | |
| | | |
| | | |
| | | |

DRAWING TITLE

ARCHITECTURAL SITE PLAN

SEAL

**PRELIMINARY
NOT FOR
CONSTRUCTION**

JOB NUMBER

14838

AA001

06.08.23



PROJECT ARCHITECT
 5411 PENN AVE
 PITTSBURGH PA, 15206
 513.241.8700
 GBBN.COM

COMMUNION LLC
 COMMUNION LLC 2144 WYLIE
 AVENUE FL 3 PITTSBURGH,
 PA, 15219

CONSULTANTS

Allen+Shariff
 MEP Engineering

MEP
 ALLEN & SHARIFF
 2 Allegheny Center
 Nova Tower 2, Suite 1001
 412-322-9280

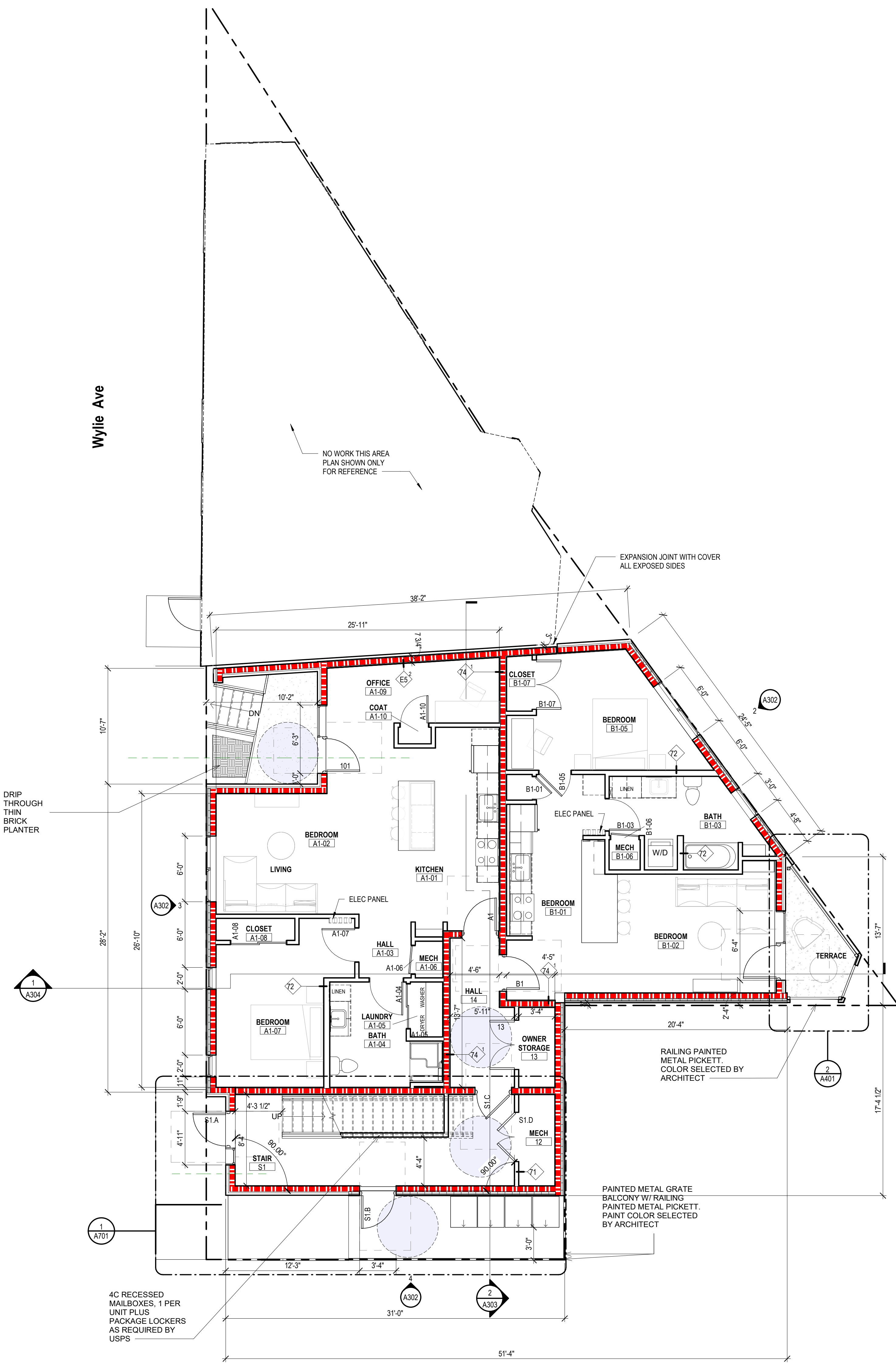
WBCM
 A DIVISION OF TRANSTRAVE

STRUCTURAL
 WBCM
 600 Bursca Dr Suite 609
 Pittsburgh, PA 15017
 412.221.5395

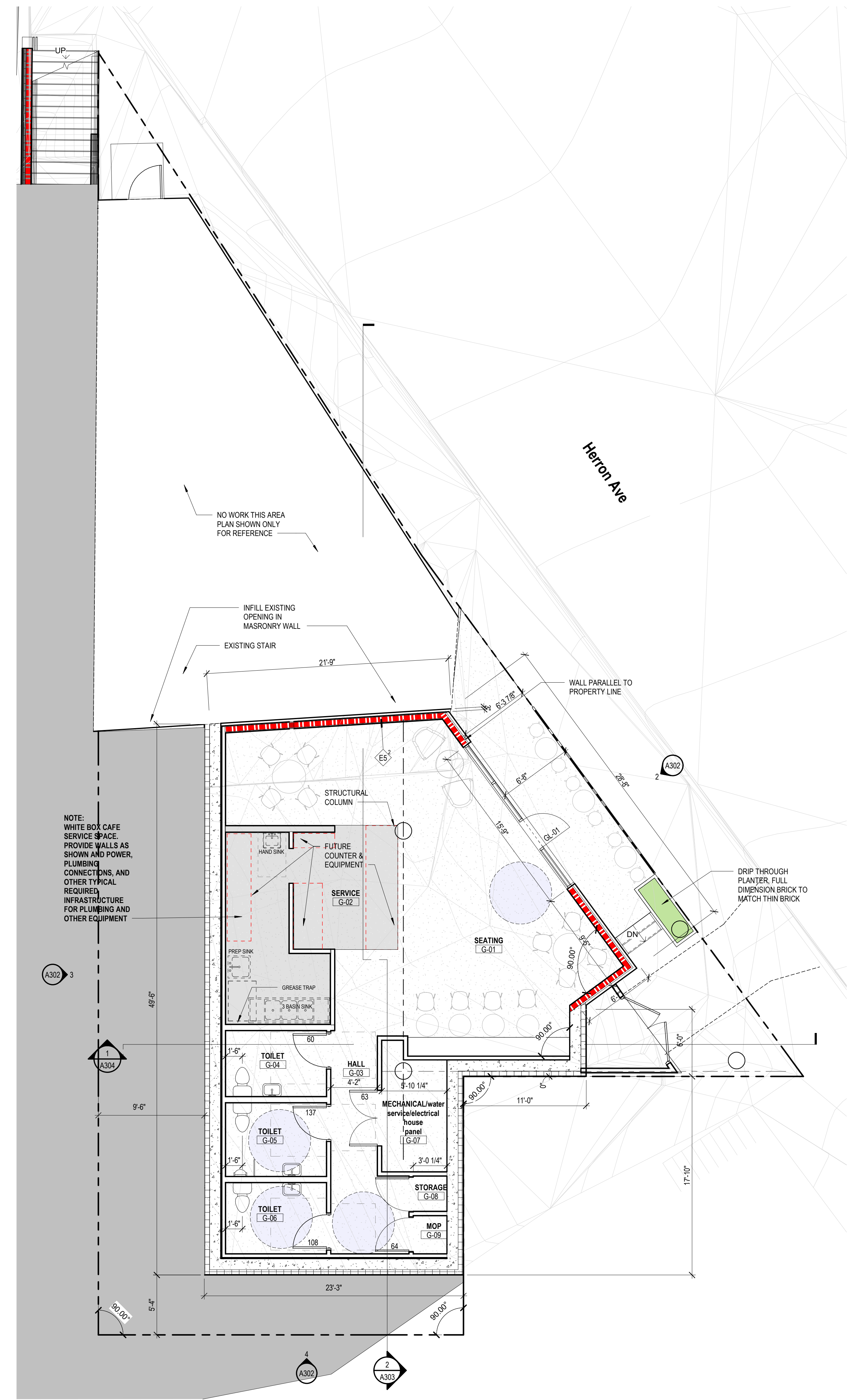
Cosmos
 TECHNOLOGIES

CIVIL
 COSMOS TECHNOLOGIES, INC.
 700 River Avenue, Suite 100
 Pittsburgh, PA 15212-5936
 412-321-3951

WYLIE AVENUE & HERRON AVENUE | 565 HERRON AVENUE, PITTSBURGH, PA 15219



LEVEL 1
 SCALE: 3/16" = 1'-0"



GROUND FLOOR
 SCALE: 3/16" = 1'-0"

KEYNOTE LEGEND SHEET

| KEYNOTE | DESCRIPTION |
|---------|--------------------------------|
| A300 | NON-RATED PARTITION |
| A301 | NON-RATED PARTITION (EXISTING) |
| A302 | 1 HOUR FIRE BARRIER |
| A303 | 1 HOUR FIRE BARRIER (EXISTING) |

- GENERAL NOTES - FLOOR PLAN**
- A. PARTITIONS TYPES**
EXCEPT WHERE INDICATED OTHERWISE, PARTITIONS SHALL BE TYPE 71, FULL HEIGHT 2x4 NOMINAL WOOD STUDS WITH 5/8-INCH GYPSUM BOARD ON BOTH SIDES EXTENDING FROM FLOOR TO THE UNDERSIDE OF FLOOR/ROOF DECK AND ACOUSTIC BATT INSULATION FULL HEIGHT IN THE STUD CAVITY AT ALL WALLS ENCLOSING BEDROOMS AND BATHROOMS. PROVIDE TILE BACKER IN LIEU OF GYPSUM BOARD AT ALL WALLS SHOWING TILE IN ELEVATION. PROVIDE FIRE RATINGS AS INDICATED ON THE FLOOR PLANS AND LIFE SAFETY PLANS.
 - B. LAYOUT AND DIMENSIONS**
DO NOT SCALE THE DRAWINGS. LAYOUT THE PARTITIONS AND OPENINGS PRIOR TO CONSTRUCTION. NOTIFY THE ARCHITECT OF ANY DISCREPANCIES WITH THE DRAWINGS.
 - C. PARTITION ALIGNMENT**
UNLESS NOTED OTHERWISE, ALIGN NEW PARTITIONS WITH THE FACE OF EXISTING CONSTRUCTION AS APPLICABLE. WHERE NEW CONSTRUCTION IS SHOWN TO FILL EXISTING WALL OPENINGS, BOTH FACES OF THE NEW CONSTRUCTION SHALL ALIGN WITH THE EXISTING WALL FACES UNLESS INDICATED OTHERWISE.
 - D. DOOR LOCATIONS**
EXCEPT WHERE DIMENSIONED OTHERWISE, LOCATE OUTER EDGES OF DOOR FRAMES 4-INCHES FROM PERPENDICULAR WALLS AND PARTITIONS.
 - E. DIMENSIONING**
UNLESS INDICATED OTHERWISE OR AS PROVIDED BY THIS GENERAL NOTE, DIMENSIONS LOCATING FRAMED PARTITIONS OR FURRED-OUT CONCRETE OR MASONRY PARTITIONS ARE TAKEN FROM THE FACE OF WALLBOARD (OR PLASTER WHERE APPLICABLE). DIMENSIONS LOCATING EXPOSED CONCRETE OR MASONRY WALLS ARE TAKEN FROM THE FACE OF CONCRETE MASONRY.
IN SOME CIRCUMSTANCES THICKNESSES OF APPLIED FINISHES MAY BE INCLUDED IN THE PLAN DIMENSION. NOTATIONS IN THE DIMENSION STRING, OR NOTED ELSEWHERE INDICATING A "CLEAR" SPACE REQUIREMENT SHALL INCLUDE THE FINISH MATERIAL REFER TO THE FINISH SCHEDULE AND DETAILS.
ACCESSIBLE CLEARANCES, WHERE REQUIRED BY CODE, SHALL BE TAKEN FROM THE FACE OF FINISH MATERIAL.

PARTITION AND WALL GRAPHIC KEY

| | |
|--|--------------------------------|
| | NON-RATED PARTITION |
| | NON-RATED PARTITION (EXISTING) |
| | 1 HOUR FIRE BARRIER |
| | 1 HOUR FIRE BARRIER (EXISTING) |

PARTITION TAG GRAPHIC KEY

| | |
|--|---|
| | FIRE ASSEMBLY RATING (HOURS) OR SMOKE PARTITION REQUIREMENT |
| | PARTITION TYPE - REFER TO SHEET A601 |
| | PARTITION WALL MODIFICATION |

HEX (A) FLOOR PLAN NOTES

| KEYNOTE | DESCRIPTION |
|---------|--------------------------------|
| A300 | NON-RATED PARTITION |
| A301 | NON-RATED PARTITION (EXISTING) |
| A302 | 1 HOUR FIRE BARRIER |
| A303 | 1 HOUR FIRE BARRIER (EXISTING) |

DRAWING ISSUE

DESIGN DEVELOPMENT

| NO. | DATE | DESCRIPTION |
|-----|----------|------------------|
| 1 | 04/08/23 | Schematic Design |

DRAWING TITLE

FLOOR PLANS

SEAL

PRELIMINARY NOT FOR CONSTRUCTION

JOB NUMBER

14838

A101

06.08.23

11/2/2023 2:55:54 PM Addenda_Docs\14838_The Middle_Mech Use Development\14838_The Middle_ARCH_2024.rvt



PROJECT ARCHITECT
 5411 PENN AVE
 PITTSBURGH PA, 15206
 513.241.8700
 GBBN.COM

COMMUNION LLC
 COMMUNION LLC 2144 WYLLIE
 AVENUE FL 3 PITTSBURGH,
 PA, 15219

CONSULTANTS

Allen+Shariff
 MEP Engineering

MEP
 ALLEN & SHARIFF
 2 Allegheny Center
 Nova Tower 2, Suite 1001
 412-322-9280

WBCM
 A DIVISION OF TRANSYSTEMS

STRUCTURAL
 WBCM
 600 Bursca Dr Suite 609
 Pittsburgh, PA 15017
 412-221-5395

Cosmos
 TECHNOLOGIES

CIVIL
 COSMOS TECHNOLOGIES, INC.
 700 River Avenue, Suite 100
 Pittsburgh, PA 15212-5936
 412-321-3951

DRAWING ISSUE

DESIGN DEVELOPMENT

| NO. | DATE | DESCRIPTION |
|-----|----------|------------------|
| 1 | 04/08/23 | Schematic Design |
| | | |
| | | |
| | | |
| | | |
| | | |
| | | |
| | | |
| | | |
| | | |

DRAWING TITLE

FLOOR PLANS

SEAL

**PRELIMINARY
 NOT FOR
 CONSTRUCTION**

JOB NUMBER

14838

A102

06.08.23

GENERAL NOTES - FLOOR PLAN

- A. PARTITIONS TYPES**
 EXCEPT WHERE INDICATED OTHERWISE, PARTITIONS SHALL BE TYPE 71, FULL HEIGHT 2x4 NOMINAL WOOD STUDS WITH 5/8-INCH GYPSUM BOARD ON BOTH SIDES EXTENDING FROM FLOOR TO THE UNDERSIDE OF FLOOR/ROOF DECK AND ACOUSTIC BATT INSULATION FULL HEIGHT IN THE STUD CAVITY AT ALL WALLS ENCLOSING BEDROOMS AND BATHROOMS. PROVIDE TILE BACKER IN LIEU OF GYPSUM BOARD AT ALL WALLS SHOWING TILE IN ELEVATION. PROVIDE FIRE RATINGS AS INDICATED ON THE FLOOR PLANS AND LIFE SAFETY PLANS.
- B. LAYOUT AND DIMENSIONS**
 DO NOT SCALE THE DRAWINGS. LAYOUT THE PARTITIONS AND OPENINGS PRIOR TO CONSTRUCTION. NOTIFY THE ARCHITECT OF ANY DISCREPANCIES WITH THE DRAWINGS.
- C. PARTITION ALIGNMENT**
 UNLESS NOTED OTHERWISE, ALIGN NEW PARTITIONS WITH THE FACE OF EXISTING CONSTRUCTION AS APPLICABLE. WHERE NEW CONSTRUCTION IS SHOWN TO FILL EXISTING WALL OPENINGS, BOTH FACES OF THE NEW CONSTRUCTION SHALL ALIGN WITH THE EXISTING WALL FACES UNLESS INDICATED OTHERWISE.
- D. DOOR LOCATIONS**
 EXCEPT WHERE DIMENSIONED OTHERWISE, LOCATE OUTER EDGES OF DOOR FRAMES 4-INCHES FROM PERPENDICULAR WALLS AND PARTITIONS.
- E. DIMENSIONING**
 UNLESS INDICATED OTHERWISE OR AS PROVIDED BY THIS GENERAL NOTE, DIMENSIONS LOCATING FRAMED PARTITIONS OR FURRED-OUT CONCRETE OR MASONRY PARTITIONS ARE TAKEN FROM THE FACE OF WALLBOARD (OR PLASTER WHERE APPLICABLE). DIMENSIONS LOCATING EXPOSED CONCRETE OR MASONRY WALLS ARE TAKEN FROM THE FACE OF CONCRETE MASONRY.
 IN SOME CIRCUMSTANCES THICKNESSES OF APPLIED FINISHES MAY BE INCLUDED IN THE PLAN DIMENSION, NOTATIONS IN THE DIMENSION STRING, OR NOTED ELSEWHERE. INDICATING A "CLEAR" SPACE REQUIREMENT SHALL INCLUDE THE FINISH MATERIAL REFER TO THE FINISH SCHEDULE AND DETAILS.
 ACCESSIBLE CLEARANCES, WHERE REQUIRED BY CODE, SHALL BE TAKEN FROM THE FACE OF FINISH MATERIAL.

PARTITION AND WALL GRAPHIC KEY

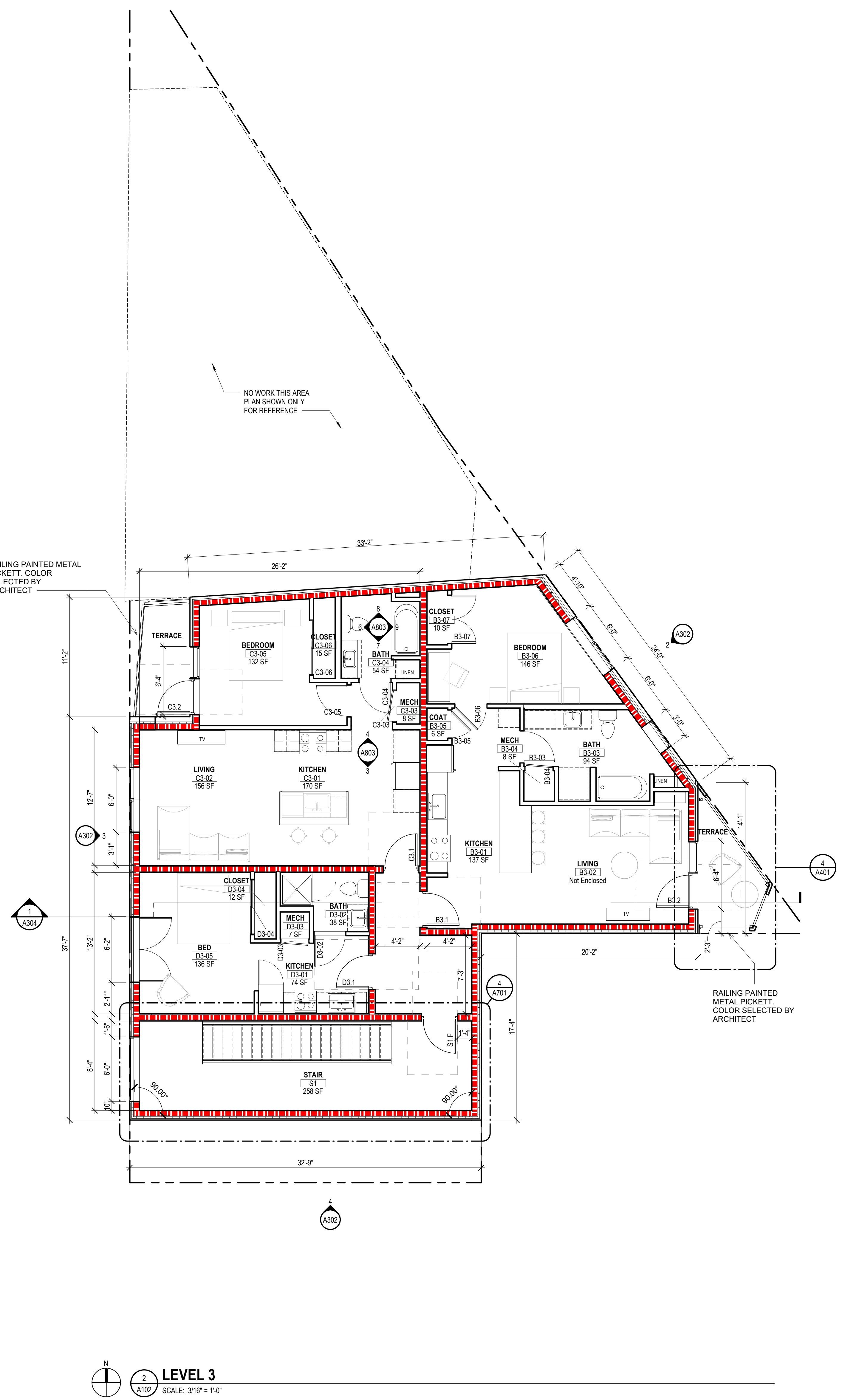
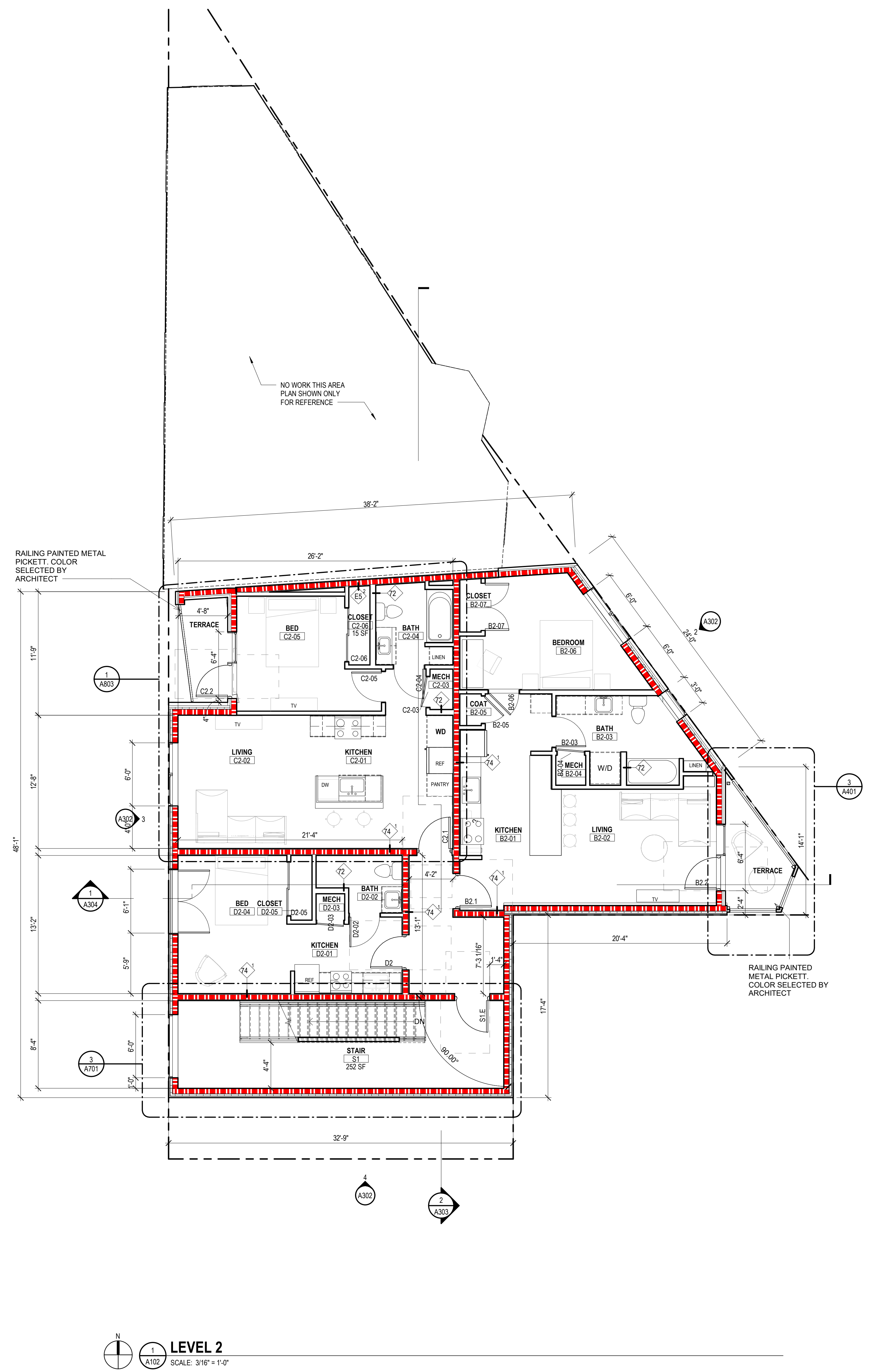
- NON-RATED PARTITION
- NON-RATED PARTITION (EXISTING)
- 1 HOUR FIRE BARRIER
- 1 HOUR FIRE BARRIER (EXISTING)

PARTITION TAG GRAPHIC KEY

- FIRE ASSEMBLY RATING (HOURS) OR SMOKE PARTITION REQUIREMENT
- PARTITION TYPE - REFER TO SHEET A601
- PARTITION WALL MODIFICATION

HEX (A) FLOOR PLAN NOTES

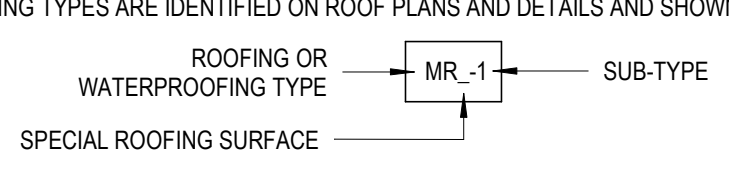
KEYNOTE DESCRIPTION





11/10/2023 2:55:55 PM A:\Arch\Draws\14838 - The Middle Metal Use Development\14838 - The Middle - ARCH - DCV.rvt

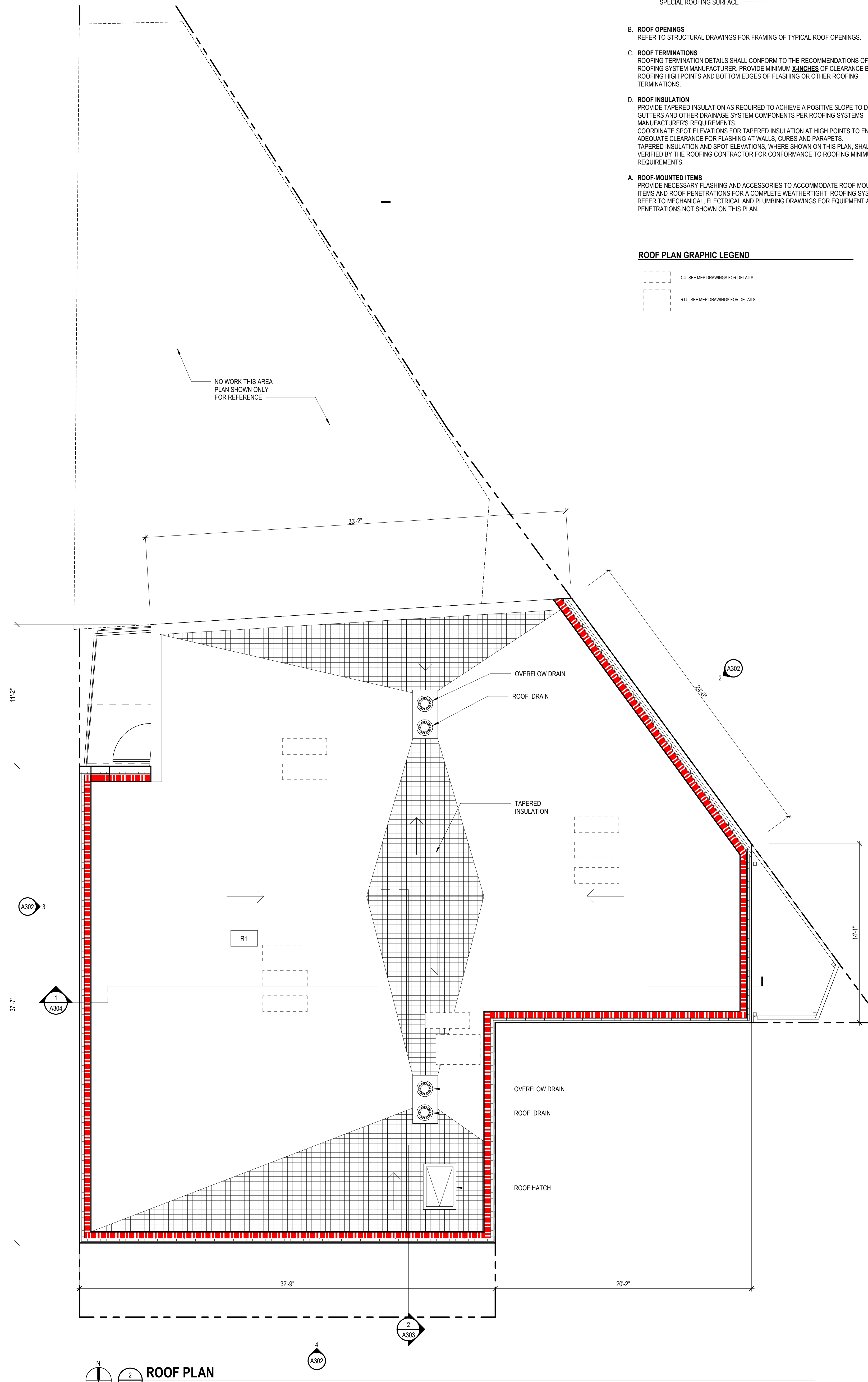
11/2/2023 2:55:55 PM Autodesk_Docs\14838_ The Middle_Mech Use Development\14838_ The Middle_ARCH_2024.rvt

GENERAL NOTES - ROOF PLAN

- A. ROOFING TYPES AND TAGS**
ROOFING TYPES ARE IDENTIFIED ON ROOF PLANS AND DETAILS AND SHOWN THUS:

- B. ROOF OPENINGS**
REFER TO STRUCTURAL DRAWINGS FOR FRAMING OF TYPICAL ROOF OPENINGS.
- C. ROOF TERMINATIONS**
ROOFING TERMINATION DETAILS SHALL CONFORM TO THE RECOMMENDATIONS OF THE ROOFING SYSTEM MANUFACTURERS. PROVIDE MINIMUM KINCHES OF CLEARANCE BETWEEN ROOFING HIGH POINTS AND BOTTOM EDGES OF FLASHING OR OTHER ROOFING TERMINATIONS.
- D. ROOF INSULATION**
PROVIDE TAPERED INSULATION AS REQUIRED TO ACHIEVE A POSITIVE SLOPE TO DRAINS, GUTTERS AND OTHER DRAINAGE SYSTEM COMPONENTS PER ROOFING SYSTEMS MANUFACTURERS REQUIREMENTS.
COORDINATE SPOT ELEVATIONS FOR TAPERED INSULATION AT HIGH POINTS TO ENSURE ADEQUATE CLEARANCE FOR FLASHING AT WALLS, CURBS AND PARAPETS.
TAPERED INSULATION AND SPOT ELEVATIONS, WHERE SHOWN ON THIS PLAN, SHALL BE VERIFIED BY THE ROOFING CONTRACTOR FOR CONFORMANCE TO ROOFING MINIMUM SLOPE REQUIREMENTS.
- A. ROOF-MOUNTED ITEMS**
PROVIDE NECESSARY FLASHING AND ACCESSORIES TO ACCOMMODATE ROOF MOUNTED ITEMS AND ROOF PENETRATIONS FOR A COMPLETE WEATHERTIGHT ROOFING SYSTEM. REFER TO MECHANICAL, ELECTRICAL AND PLUMBING DRAWINGS FOR EQUIPMENT AND PENETRATIONS NOT SHOWN ON THIS PLAN.

ROOF PLAN GRAPHIC LEGEND

-  DU: SEE MEP DRAWINGS FOR DETAILS.
-  RTU: SEE MEP DRAWINGS FOR DETAILS.



ROOF PLAN
SCALE: 1/4" = 1'-0"



PROJECT ARCHITECT
5411 PENN AVE
PITTSBURGH PA, 15206
513.241.8700
GBBN.COM

COMMUNION LLC
COMMUNION LLC 2144 WYLIE
AVENUE FL 3 PITTSBURGH,
PA, 15219

CONSULTANTS

Allen+Shariff
MEP Engineering

MEP
ALLEN & SHARIFF
2 Allegheny Center
Nova Tower 2, Suite 1001
412-322-9280

WBCM
A DIVISION OF TRANSYSTEMS

STRUCTURAL
WBCM
600 Bursca Dr Suite 609
Pittsburgh, PA 15017
412.221.5385

Cosmos
TECHNOLOGIES

CIVIL
COSMOS TECHNOLOGIES, INC.
700 River Avenue, Suite 100
Pittsburgh, PA 15212-5936
412-321-3951

DRAWING ISSUE

DESIGN DEVELOPMENT

| NO. | DATE | DESCRIPTION |
|-----|----------|------------------|
| 1 | 04/08/23 | Schematic Design |
| | | |
| | | |
| | | |
| | | |
| | | |
| | | |
| | | |
| | | |

DRAWING TITLE

ROOF PLAN

SEAL

**PRELIMINARY
NOT FOR
CONSTRUCTION**

JOB NUMBER

14838

A103

06.08.23

WYLIE AVENUE & HERRON AVENUE | 565 HERRON AVE., PITTSBURGH, PA 15219